

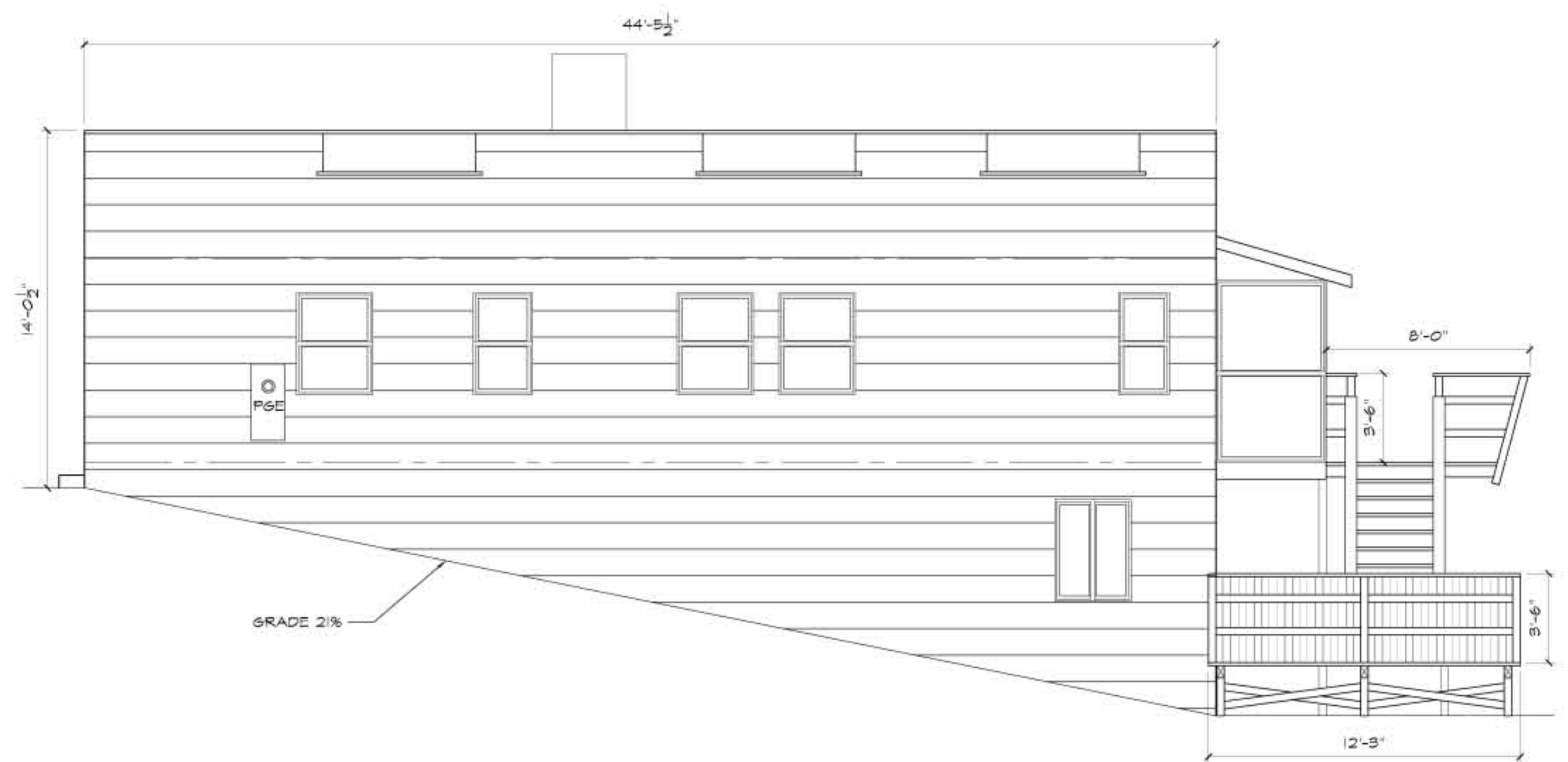
EXISTING SOUTHWEST ELEVATION TO REMAIN UNCHANGED
SCALE: 1/4"=1'-0"



EXISTING NORTHWEST ELEVATION TO REMAIN UNCHANGED
SCALE: 1/4"=1'-0"



EXISTING NORTHEAST ELEVATION TO REMAIN UNCHANGED
SCALE: 1/4"=1'-0"



EXISTING SOUTHEAST ELEVATION TO REMAIN UNCHANGED
SCALE: 1/4"=1'-0"